

THIS COPY IS PROVIDED ON A RESTRICTED BASIS AND IS NOT TO BE USED IN ANY WAY DETRIMENTAL TO THE INTERESTS OF PANDUIT CORP.

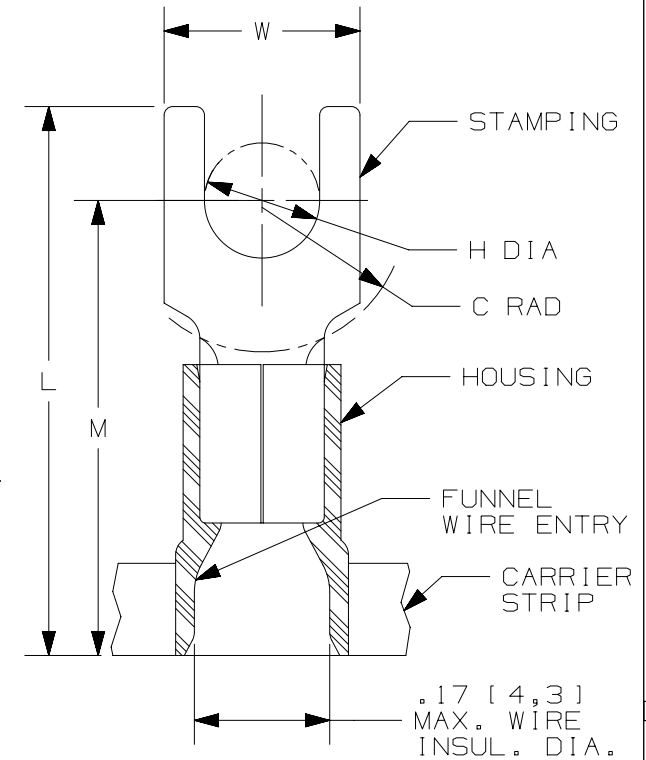
| PANDUIT PART # | STUD SIZE |        | DIMENSIONS in. [mm] |               |               |               |               | CA9 SERIES CRIMP DIE | CD-800(EZ) SERIES CRIMP DIE |
|----------------|-----------|--------|---------------------|---------------|---------------|---------------|---------------|----------------------|-----------------------------|
|                | ENGLISH   | METRIC | L ± .03 [0,8]       | W ± .01 [0,3] | C ± .02 [0,5] | M ± .03 [0,8] | H ± .01 [0,3] |                      |                             |
| PMV2-3FB-3K    | --        | M3     | .78 [19,8]          | .23 [5,9]     | .20 [5,1]     | .64 [16,3]    | .13 [3,3]     | CD9-2A               | CD-800-2                    |
| PV14-6FB-3K    | #6        | M3,5   | .78 [19,8]          | .28 [7,1]     | .19 [4,8]     | .64 [16,3]    | .15 [3,8]     |                      |                             |
| PV14-6FNB-3K   | #6        | M3,5   | .78 [19,8]          | .24 [6,2]     | .19 [4,8]     | .64 [16,3]    | .15 [3,8]     |                      |                             |
| PV14-8FB-3K    | #8        | M4     | .84 [21,3]          | .31 [7,9]     | .23 [5,9]     | .68 [17,3]    | .17 [4,3]     |                      |                             |
| PV14-10FB-3K   | #10       | --     | .86 [21,8]          | .34 [8,6]     | .24 [6,2]     | .70 [17,8]    | .20 [5,0]     |                      |                             |
| PV14-10FNB-3K  | #10       | --     | .86 [21,8]          | .31 [7,9]     | .24 [6,2]     | .70 [17,8]    | .20 [5,0]     |                      |                             |
| PMV2-5FB-3K    | --        | M5     | .86 [21,8]          | .34 [8,6]     | .25 [6,4]     | .70 [17,8]    | .21 [5,3]     |                      |                             |
| PV14-14FB-3K   | 1/4"      | M6     | 1.03 [26.2]         | .44 [11,2]    | .32 [8,1]     | .78 [19,8]    | .27 [6,9]     |                      |                             |

PRESS/APPLICATOR COMPATIBILITY CHART

| PRESS      | CP-871          | CP-861 |
|------------|-----------------|--------|
| APPLICATOR | CA9<br>CA-800EZ | CA-800 |

NOTES:

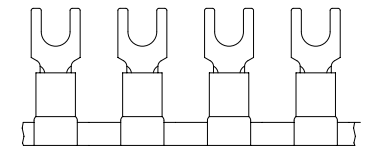
- UL LISTED AND CSA CERTIFIED FOR:
  - A. #16-14 AWG [1,5-2,5 mm<sup>2</sup>] SOLID OR STRANDED COPPER WIRE
  - B. 221°F [105°C] MAX. OPERATING TEMPERATURE
  - C. 600 V. MAX. VOLTAGE RATING
- SEE [www.panduit.com](http://www.panduit.com) FOR PACKAGE QUANTITIES
- MATERIAL:
  - A. STAMPING: .03" [0,76] THK COPPER, TIN PLATED
  - B. HOUSING: VINYL, BLUE
- DIMENSIONS IN BRACKETS ARE METRIC EQUIVALENT
- WIRE STRIP LENGTH: 1 1/32" <sup>+1/32</sup>/<sub>-0</sub> [8,7mm <sup>+0,8</sup>/<sub>-0</sub>]



LISTED  
587H  
E52164



CERTIFIED  
LR31212



| REV | DATE     | BY  | CHK  | APR | DESCRIPTION   | ECN           |
|-----|----------|-----|------|-----|---|---------------|
| 07  | 12/16    | TMR | TMR  | RGB | REVISED CERTIFICATION, METRIC TOL WAS TWO DECIMALS                            | N41080-A41080 |
| 06  | 07/14    | MBY | JHNU | RGB | REVISED NOTES, MOVED TOOLS TO TABLE, REVISED CERTIFICATION                    | N41080-A41080 |
| 05  | 09.07.12 | JBN | LCA  | VMB | ADDED METRIC EQUIVALENT. REVISED NOTES. UPDATED DRAWING TO CURRENT STANDARDS. | A41080        |

|  |                    |
|--|--------------------|
| TITLE<br><b>FORK TERMINALS, 2 PC. VINYL INSULATED,<br/>#16-14, CONTINUOUS REEL</b> |                    |
| CUSTOMER DRAWING   |                    |
| ITEM REVISION NAME<br>N41080BA/07  | <b>PANDUIT</b>     |
| DATASET FILE NAME<br>N41080BA_DC/07A   |                    |
| UNLESS OTHERWISE SPECIFIED,<br>DIMENSIONAL TOLERANCES ARE: IN [mm]                 |                    |
| .X ±<br>.XX ±  | .XXX ±<br>ANGLES ± |
| THIRD ANGLE<br>PROJECTION  |                    |
| DRAWN BY<br>DSM  | DATE<br>-          |
| CHK<br>RAKL  | SCALE<br>N.T.S.    |
| DRAWING NUMBER:<br>A41080  |                    |
| SHT 1 OF 1   |                    |
| SIZE<br>A  |                    |

D101000DA/15